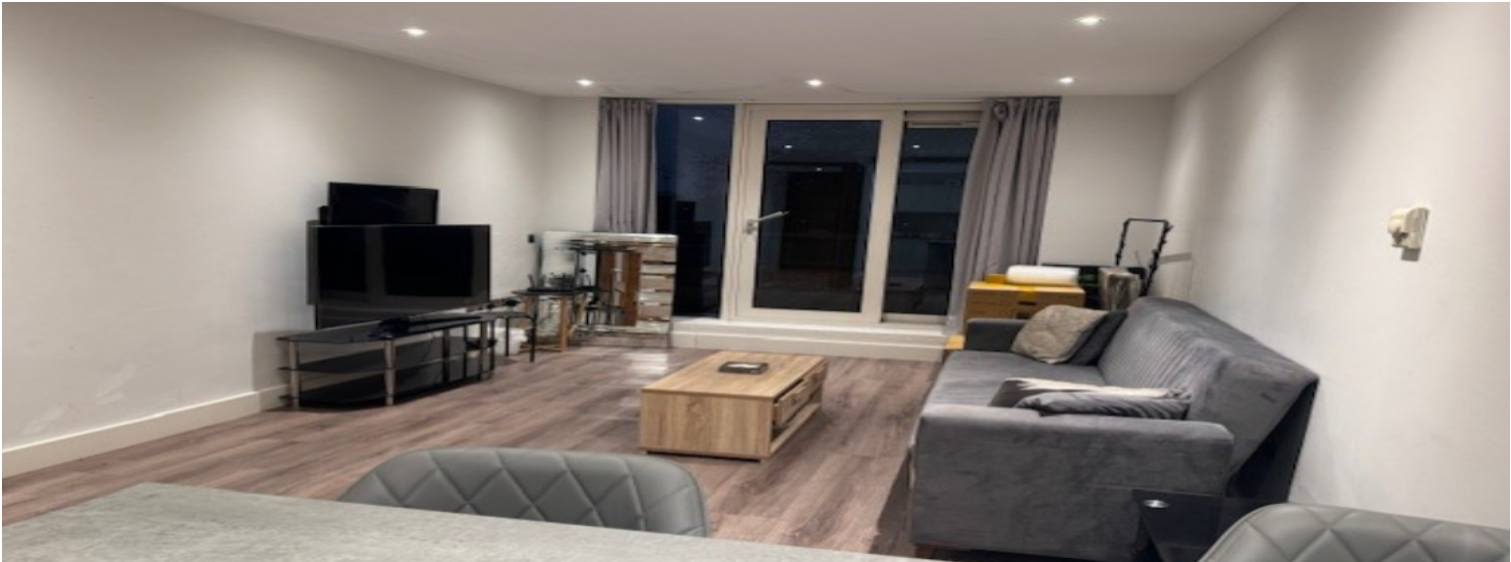


1 Bed Flat to Rent in South Wharf Road Paddington W2

South Wharf Road, Paddington, W2 1JB

£588.00 per week / £2550.00 pcm



Property Details

Property Type	Flat	Reference	1739
Bedrooms	1 Bedroom	Bathrooms	1 Bathroom
Receptions	1 Reception	Status	To Let
Garden	Yes	Parking	N/A

Description

Westcliffe Apartments is a modern 24 hour portered block, situated in a prime and popular development in Paddington Basin.

This modern one double bedroom apartment is in good condition throughout,being approximatley 495 sq ft. With a modern fitted kitchen, breakfast bar to the living room. Double bedroom with built in wardrobe. Spacious bathroom with walk in shower. French doors to a small balcony in the bedroom and living room. Available for immediate occupation. Westcliffe

Apartments is ideally located for all the amenities that Paddington Basin has to offer. Paddington Main line station and Edgware Road Underground Station is a short walk away. Plenty of shops, restaurants and coffee shops close by.

Key Features

- Entrance Hall
- Large Reception Room
- Open Plan Equipped Fitted Kitchen
- Double Bedroom
- Shower Room/wc
- Private Balcony
- Wood Flooring Throughout
- 24 Hour Concierge
- Bright & Spacious
- Private Balcony

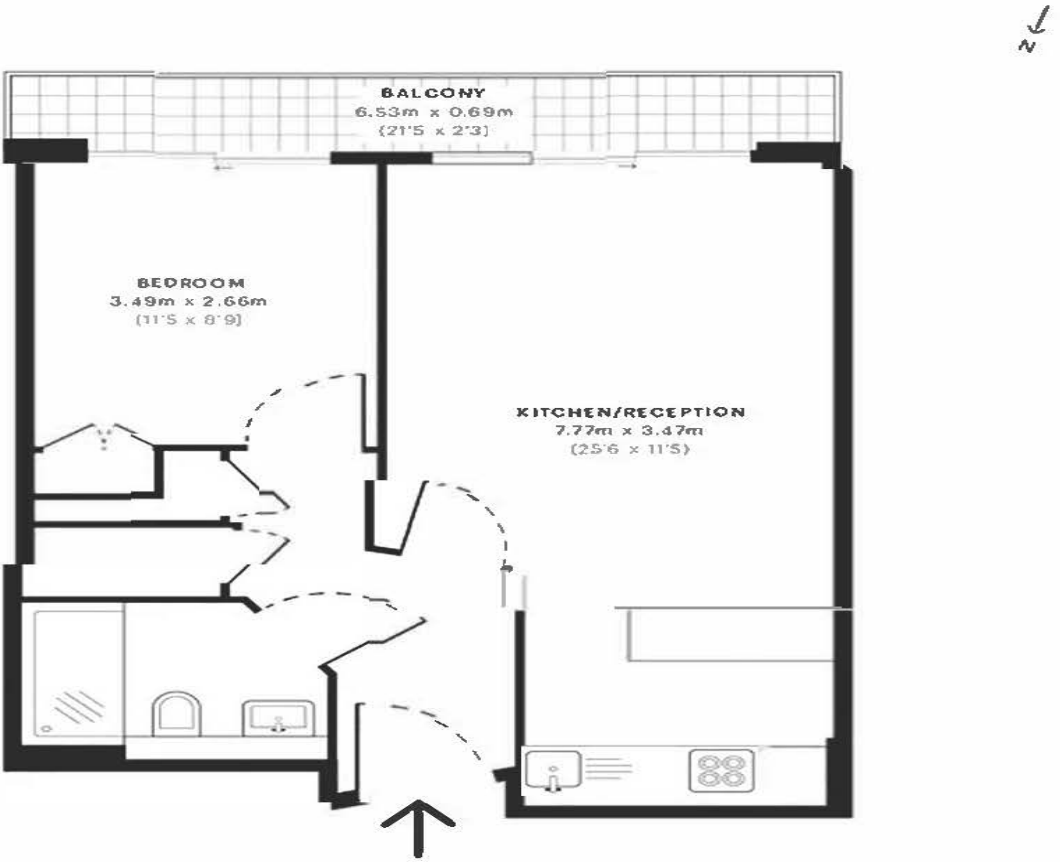
Park Estates London

15 Dorset Street, London W1U 6PX

Tel: 020 7486 2828 | Email: info@parkestateslondon.co.uk

www.parkestateslondon.co.uk

Westcliffe Apts W2
46 sq m / 495 sq ft



These particulars are intended to give a fair description and give guidance to intending purchasers/tenants and do not constitute an offer or contract. All measurements are approximate and for guidance only. Park Estates London.