

£2.500,000

Sussex Lodge, Bayswater, W2



3 Bedrooms



2 Bathrooms



1 Reception

Spacious 3 double bedroom apartment situated in Sussex Lodge W2.

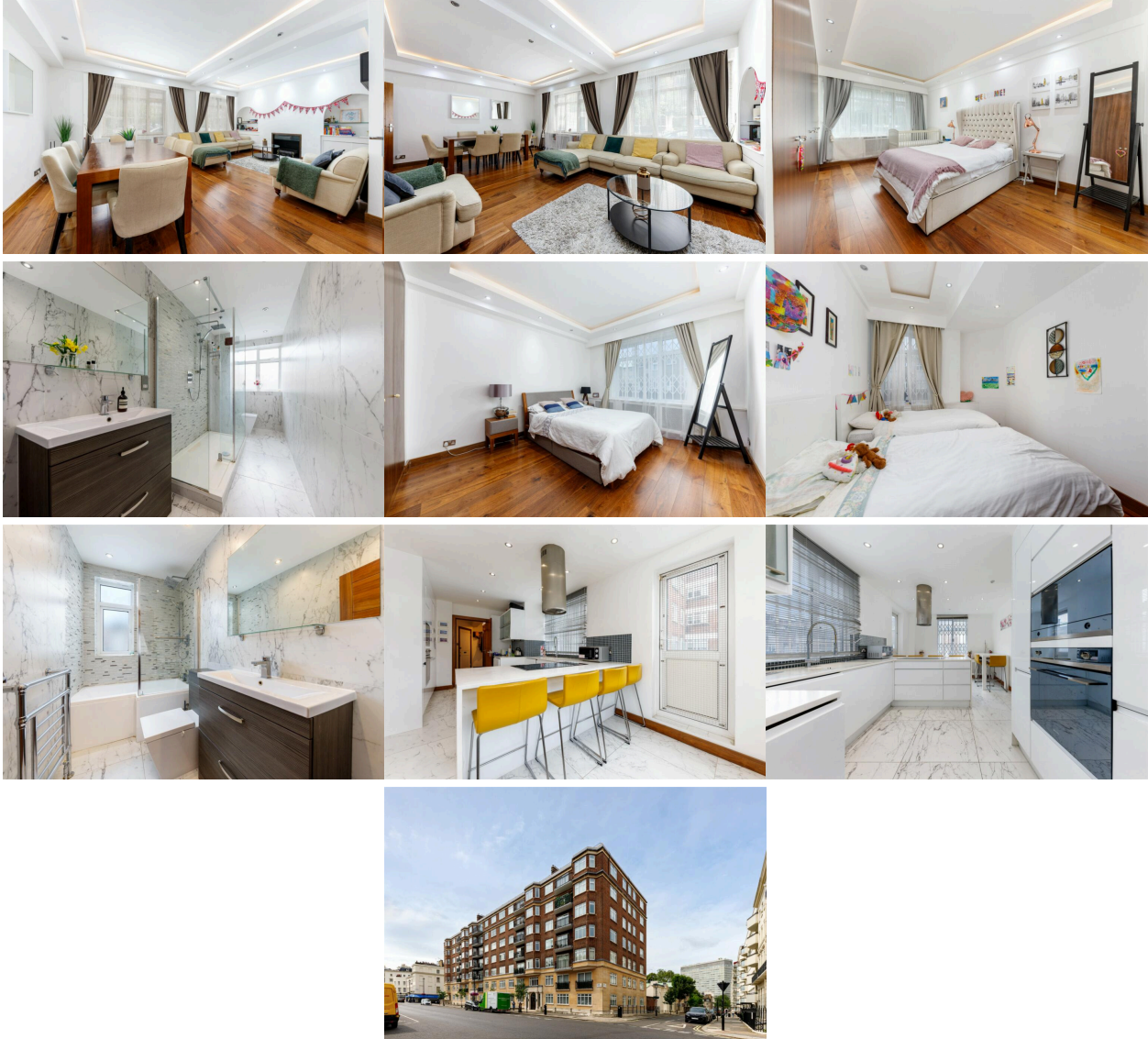
Bright, three bedroom apartment in very good order throughout, set in Sussex Lodge, a well looked after, 24 hour portered block. This good size three bedroom apartment benefits from a spacious reception/dining room, modern good size kitchen and 2 bathrooms. A parking space is available by separate negotiation.

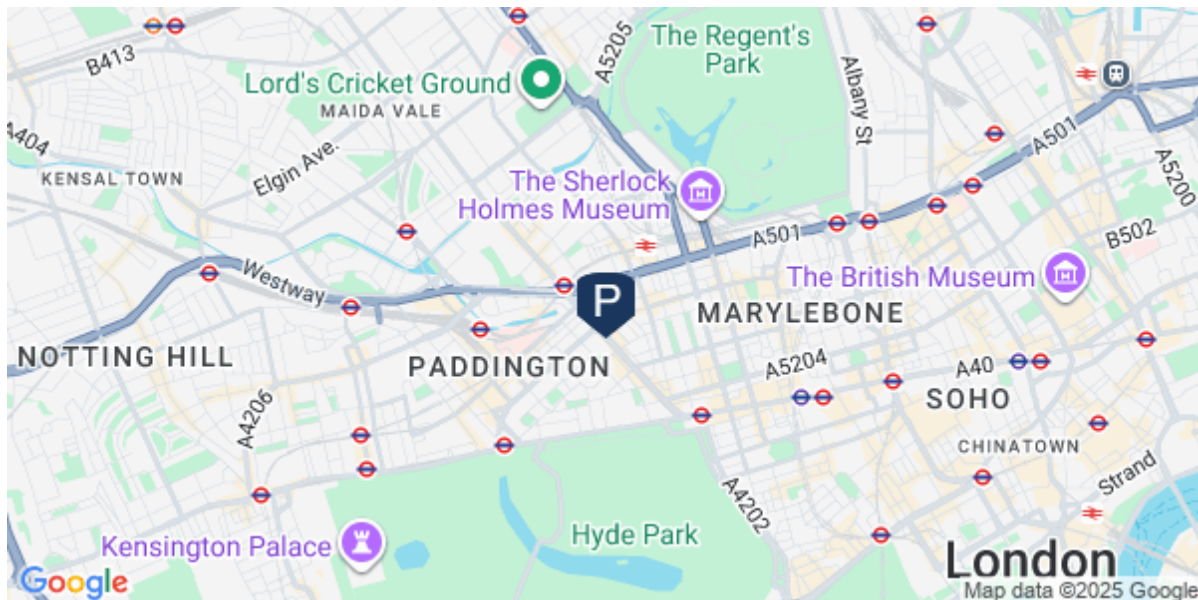
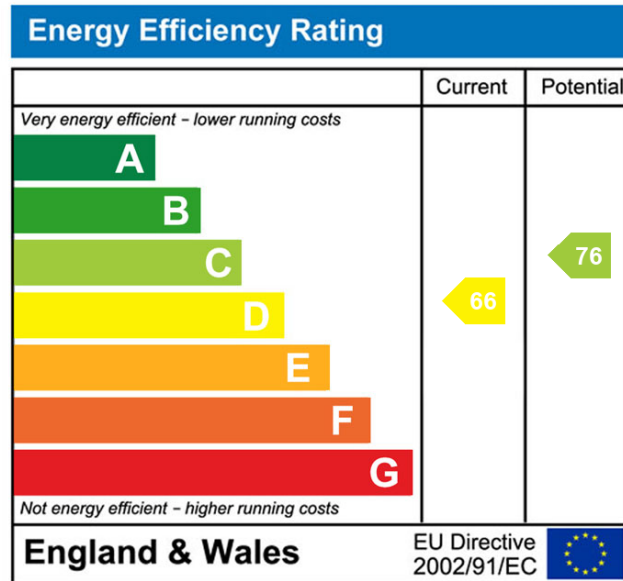
Sussex Lodge is ideally situated with easy access to Hyde Park, Lancaster Gate Underground and all the fabulous amenities that Hyde Park has to offer.

Share of freehold - Lease Approx 981 years

- ✓ Entrance Hall
- ✓ Double Reception/Dining Room
- ✓ Fully Fitted and Equipped Kitchen
- ✓ First Double Bedroom with En Suite
- ✓ 2 Further Bedrooms
- ✓ Family Bathroom
- ✓ Plenty of Storage
- ✓ Good Condition Throughout
- ✓ Share of Freehold
- ✓ Approx 1380 sq ft

Ground Rent - Peppercorn
Service Charge - Approx £12720.00
Reserve Fund - £6000.00







**Sussex Lodge,
Sussex Place, W2**

Approximate Gross Internal Area 128.20 sq m (1380 sq ft)



Ground Floor