

1 Bedroom Apartment Park West W2

Edgware Road, Marble Arch, W2 2RA

£450,000



Property Details

Property Type	Flat	Reference	1729
Bedrooms	1 Bedroom	Bathrooms	1 Bathroom
Receptions	1 Reception	Status	Available

Description

Bright One Double Bedroom Apartment in Park West W2,

Charming and bright apartment, offered for sale in good condition throughout situated in ParkWest an art deco 1930's purpose built block, with 24 hour porter. the apartment has a modern fully fitted kitchen, fully tiled shower room/wc. Double bedroom and comfortable reception room . This apartment has been well looked after by the curent owners and offers the apartment for sale with vacant possion. Park West is located on Edgware Road with the entrance in Park West Place. A ten minute walk to Marble Arch and Oxford Street. Edgware Road Underground is a few minutes walk. Great shops and restaurants in Connaught Village close by.

Key Features

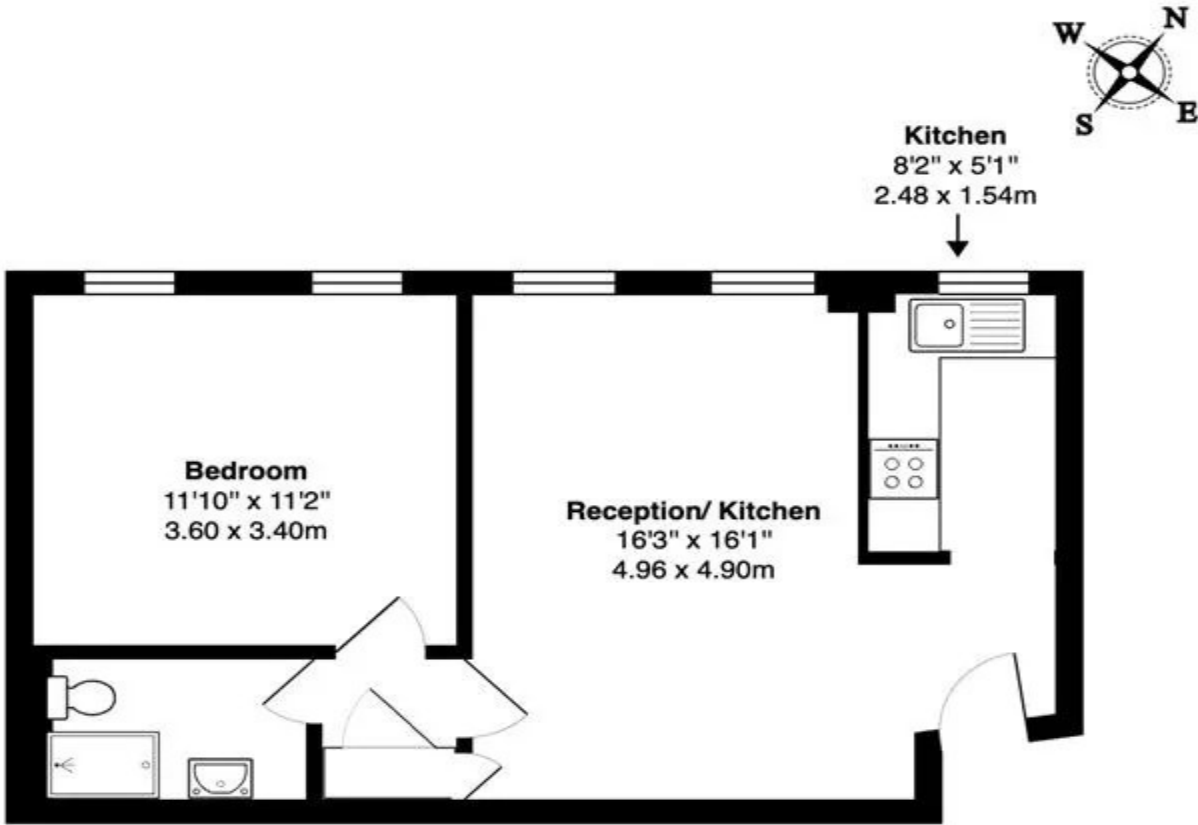
- Entrance Hall
- Reception Room
- Fitted Modern Kitchen
- Tiled Shower Room/wc
- Wood Flooring
- Entry Phone System
- 24 Hour Portered Block
- Bright Apartment
- Good Condition Throughout
- Great Location

Park Estates London

15 Dorset Street, London W1U 6PX

Tel: 020 7486 2828 | Email: info@parkestateslondon.co.uk

www.parkestateslondon.co.uk



5th floor

Park West, Edgware Road, W2

Total Gross Area: 449 ft² ... 41.7 m²

All measurements are approximate and for identification guideline purposes only, not to scale.
Compliant with the RICS code of measuring practice

These particulars are intended to give a fair description and give guidance to intending purchasers/tenants and do not constitute an offer or contract. All measurements are approximate and for guidance only. Park Estates London.