

£1,495 pw (£6,478 pcm)
Merchant Square, Paddington, W2



3 Bedrooms



2 Bathrooms



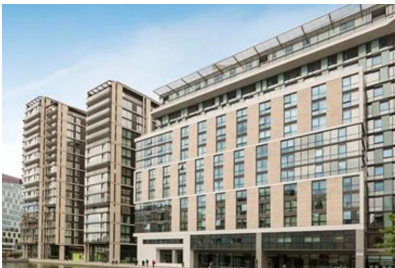
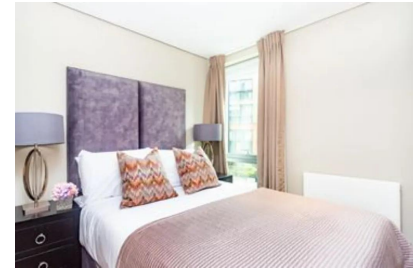
1 Reception

A stunning interior designed 3 bedroom, 2 bathroom apartment with water views, set within the heart of Paddington Basin.

With a bright reception room with great views, a modern fully fitted kitchen, three bedrooms and 2 bathrooms. Set on the second floor of this popular, portered block, this apartment has plenty of storage, a secure underground parking space and is available furnished or unfurnished. This block at Merchant Square has great transport links at Paddington, local shops, cafes and restaurants that the area by the Grand Union Canal has to offer.

- ✓ Furnished or Unfurnished
- ✓ Air Conditioning
- ✓ 3 Bedrooms
- ✓ Bathroom & En Suite
- ✓ Underground Parking
- ✓ Concierge
- ✓ Modern Block
- ✓ Council Tax Band E
- ✓ Modern and Well decorated
- ✓ Near to Paddington

These particulars are intended to give a fair description and guidance to intending purchasers/tenants and do not constitute an offer or contract. All measurements are approximate and for guidance only. Park Estates London.



Energy Performance Certificate

Energy Efficiency Rating		
	Current	Potential
Very energy efficient - lower running costs		
A		
B		
C		
D		
E		
F		
G		
Not energy efficient - higher running costs		
England & Wales	86	86
EU Directive 2002/91/EC		

Location



Floor Plan

