

£749,950

Marble Arch Apartments, Marylebone, W1H



2 Bedrooms



2 Bathrooms



1 Reception

Park Estates are pleased to offer for sale a bright and spacious 2 double bedroom apartment set in the well looked after Marble Arch Apartments.

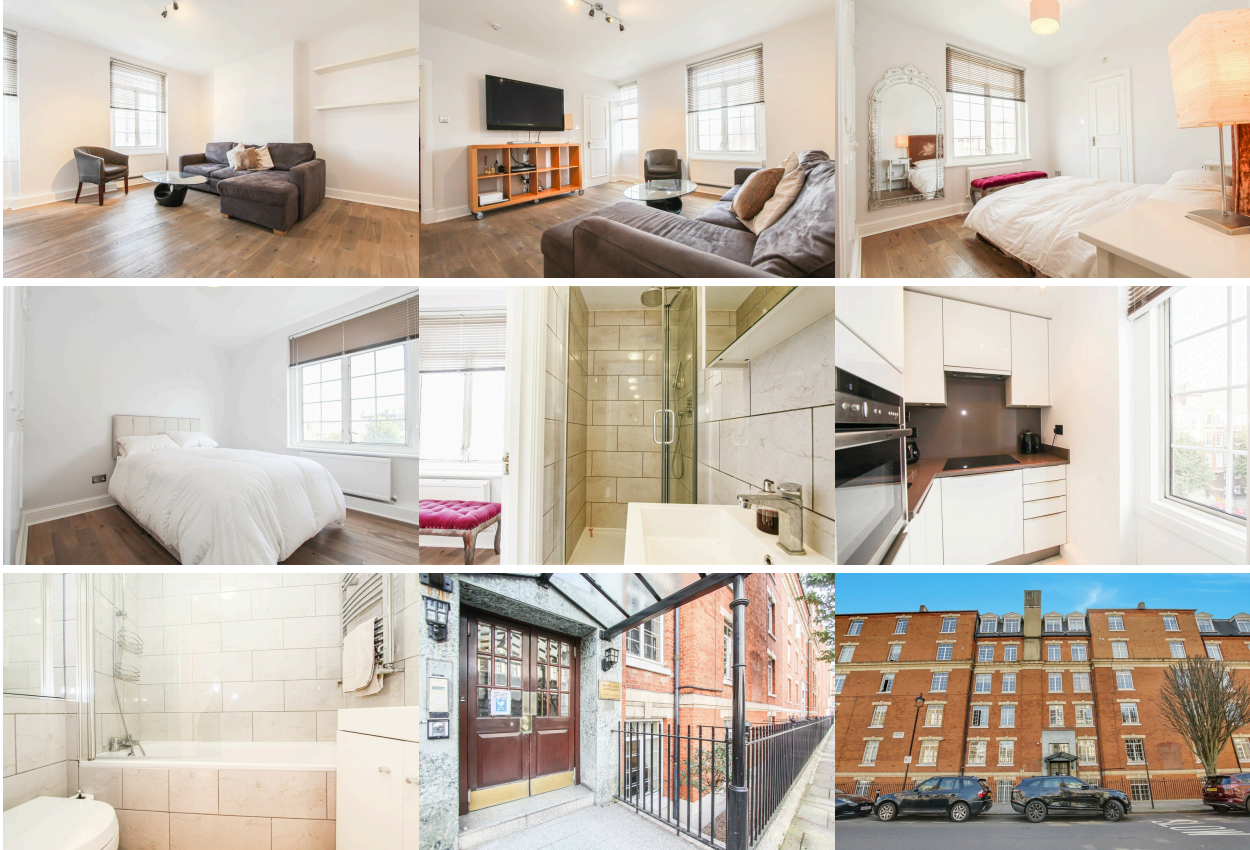
This apartment is in good condition throughout, having recently been decorated. With wood flooring, fitted wardrobes in both bedrooms, a modern kitchen, main bathroom, fully tiled and an en suite shower room.


The block has an excellent 24 hour porter service.


Marble Arch Apartments is located on Harrowby Street, a ten minute walk to Marble Arch, Oxford Street and Baker Street for all the great shopping, coffee shops and restaurants that Marylebone has to offer.

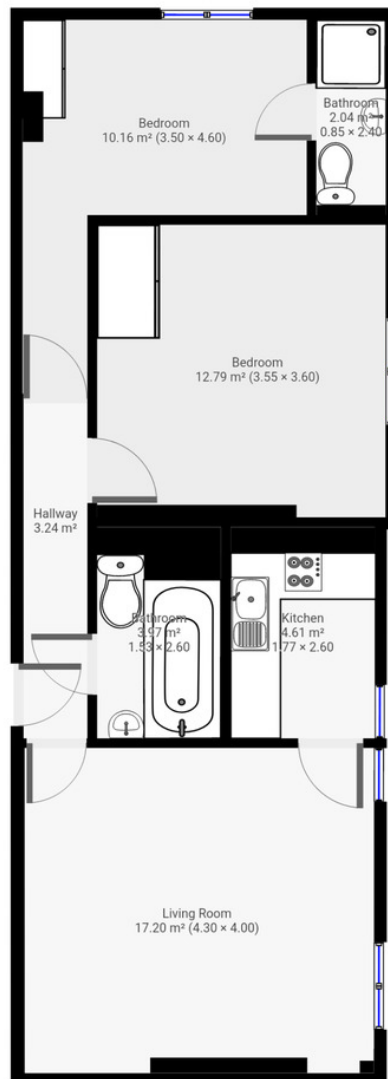
- ✓ Bright & Spacious 2 DB Apartment
- ✓ Entrance Hall
- ✓ Reception/Dining Room
- ✓ 2 Double Bedrooms
- ✓ 1 Fully Tiled Bathroom/wc
- ✓ En Suite Shower Room
- ✓ Fully Fitted Kitchen
- ✓ Wood Flooring

Edgware Road Underground is also close by.



Energy Efficiency Rating		
	Current	Potential
Very energy efficient - lower running costs		
A		
B		
C		
D		
E		
F		
G		
Not energy efficient - higher running costs		
	73	76
England & Wales	EU Directive 2002/91/EC 	

Environmental Impact (CO ₂) Rating		
	Current	Potential
Very environmentally friendly - lower CO ₂ emissions		
A		
B		
C		
D		
E		
F		
G		
Not environmentally friendly - higher CO ₂ emissions		
	76	80
England & Wales	EU Directive 2002/91/EC 	



DISCLAIMER: FLOORPLAN MEASUREMENTS ARE PROVIDED AS APPROXIMATE AND ARE FOR ILLUSTRATIVE PURPOSES ONLY. WHILE WE DO NOT DOUBT THE ACCURACY AND COMPLETENESS OF THE FLOORPLAN, YOU OR YOUR ADVISORS SHOULD CONDUCT A CAREFUL, INDEPENDANT INVESTIGATION OF THE PROPERTY IN RESPECT OF MONETARY VALUATION.