

# Modern Studio Apartment to Rent

Harrowby Street, Marylebone, W1H 5PQ

£450.00 per week / £1950.00 pcm



## Property Details

Property Type	Studio	Reference	1737
Bedrooms	Studio	Bathrooms	1 Bathroom
Receptions	No	Status	To Let

## Description

Modern Studio Apartment in Marble Arch Apartments W1H

Charming and in very good order, a bright Studio Aparmtent available to rent in this popular 24 hour portered block. With a spacious walk in shower and modern fitted separate kitchen with wood flooring and spacious fitted wardrobes. Marble Arch Apartments is ideally located for the wonders of Hyde Park, great shopping at Oxford Street. A ten minute walk to Baker Street and Connaught Village. Edgware Road Underground station is close by.

## Key Features

- Entrance Hall
- Studio Room
- Separate Modern Kitchen
- Fully tiled Modern Shower/wc
- Fully fitted and furnished
- Fitted Wardrobes
- Excellent Condition
- 24 Hour Portered Block
- Centrally Located
- Close to many transport stations

## **Park Estates London**

15 Dorset Street, London W1U 6PX

Tel: 020 7486 2828 | Email: [info@parkestateslondon.co.uk](mailto:info@parkestateslondon.co.uk)

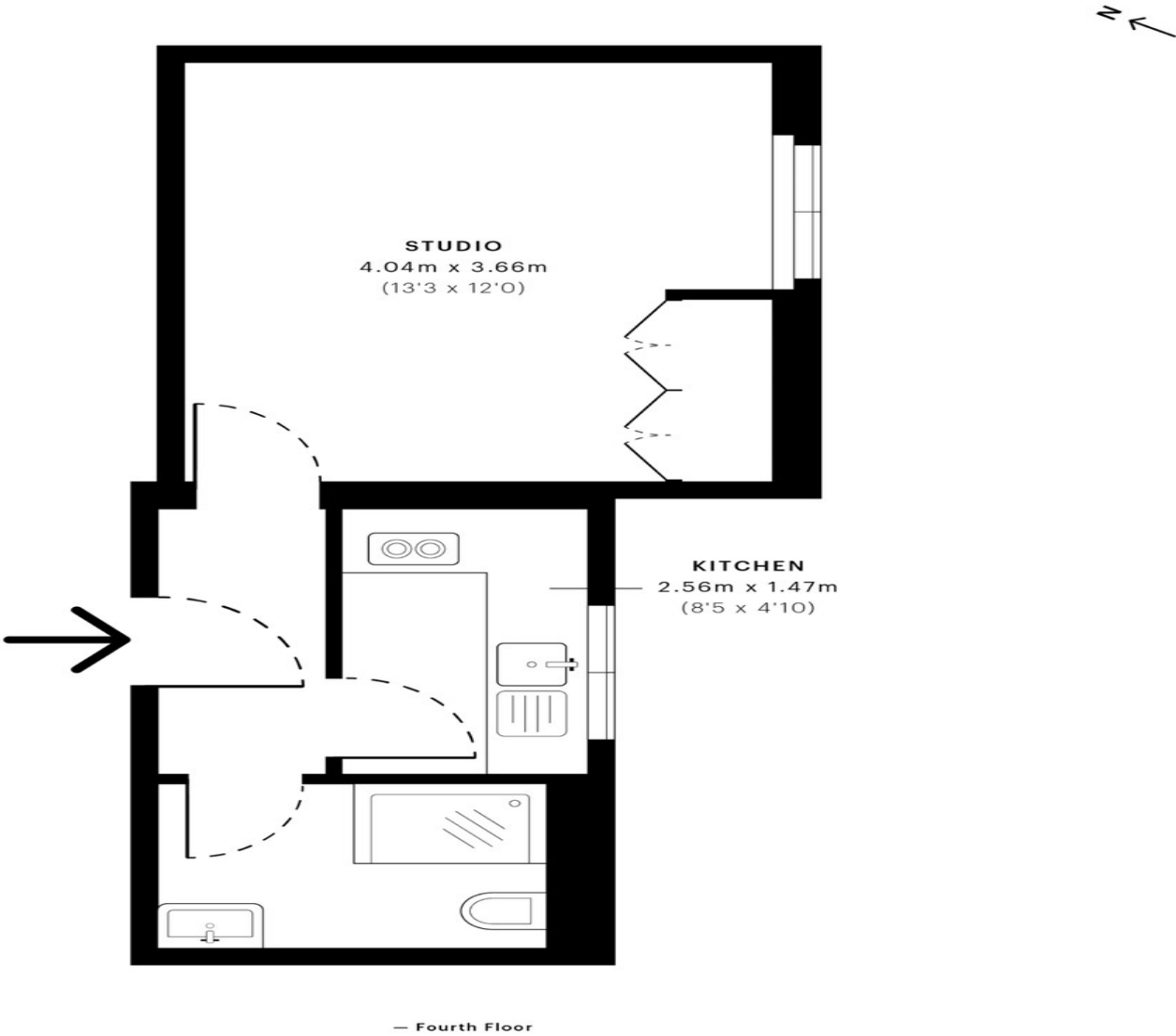
[www.parkestateslondon.co.uk](http://www.parkestateslondon.co.uk)

Harrowby Street, W1H

CAPTURE DATE 08/10/2021 LASER SCAN POINTS 634,909

GROSS INTERNAL AREA

25.53 sqm / 274.80 sqft



These particulars are intended to give a fair description and give guidance to intending purchasers/tenants and do not constitute an offer or contract. All measurements are approximate and for guidance only. Park Estates London.