

**£800.00 pw** (£3466.66 pcm)

**Marble Arch Apartments, Marylebone, W1H**



2 Bedrooms



2 Bathrooms



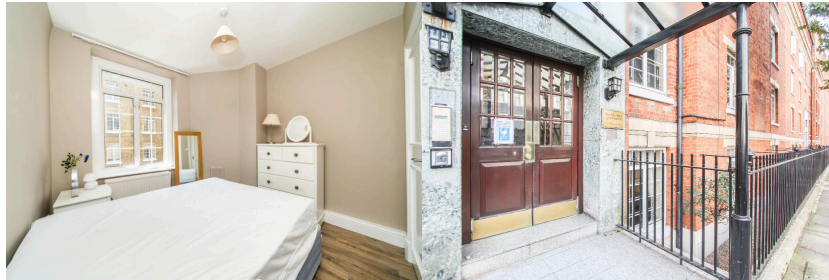
1 Reception

Bright 2 double bedroom apartment, set in a well known and well looked after 24 hour portered block.

Marble Arch Apartments is a secure block, set to the back of the building. This 2 bedrooms, 2 bathroom apartment is offered for rent in good condition. With Reception/dining room, main bathroom, en suite shower room. 2 double bedrooms and fitted kitchen.

The block is a ten minute walk to Baker Street and Marble Arch. Edgware Road Underground Station is few minutes walk away.

- ✓ Entrance Hall
- ✓ Reception/Dining Room
- ✓ 2 Double Bedrooms
- ✓ Fitted Kitchen
- ✓ Main Bathroom/wc
- ✓ En Suite Shower Room
- ✓ Plenty of Storage
- ✓ 24 Hour Portered Block
- ✓ Good Condition Throughout
- ✓ 10 Minutes Walk to Marble Arch & Oxford Street



## Energy Efficiency Rating

	Current	Potential
<i>Very energy efficient - lower running costs</i>		
<b>A</b>		
<b>B</b>		
<b>C</b>	77	81
<b>D</b>		
<b>E</b>		
<b>F</b>		
<b>G</b>		
<i>Not energy efficient - higher running costs</i>		
<b>England &amp; Wales</b>	EU Directive 2002/91/EC	

