

£450 pw (£1,950 pcm)

Pinehurst Court, Notting Hill Gate, W11



1 Bedroom



1 Bathroom



1 Reception



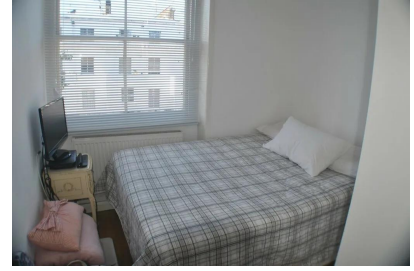
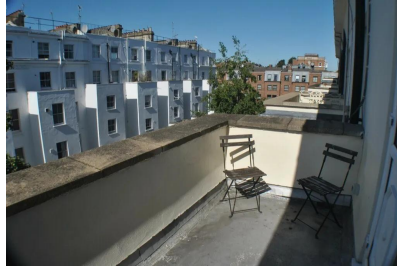
Garden

A charming and bright one double bedroom apartment available for rent in the popular Colville Gardens W11, situated near to Portobello market. Available to rent in April 26, FURNISHED or UNFURNISHED


With a fitted kitchen and a full shower room/WC, good size wardrobes to the bedroom, this apartment is in excellent condition. Located on the 3rd floor with a balcony off the reception room, with great views. The block benefits private communal gardens. Located in Pinehurst Court just off Colville Gardens and near the trendy Portobello Road In Notting Hill.

- ✓ 1 Double Bedroom Apartment with private Balcony
- ✓ Reception / Dining Room
- ✓ Double Bedroom
- ✓ Shower Room/wc
- ✓ Kitchen
- ✓ Care Taker & Entry Phone System
- ✓ Communal Gardens
- ✓ Private Balcony
- ✓ Council Tax Band B
- ✓ Available 9 December 2022

These particulars are intended to give a fair description and guidance to intending purchasers/tenants and do not constitute an offer or contract. All measurements are approximate and for guidance only. Park Estates London.



Energy Performance Certificate

Energy Efficiency Rating		
	Current	Potential
<i>Very energy efficient - lower running costs</i>		
A		
B		
C		
D		
E		
F		
G		
<i>Not energy efficient - higher running costs</i>		
	75	83
England & Wales	EU Directive 2002/91/EC 	

Location

