

£450 pw (£1,950 pcm)
Harrowby Street, Marylebone, W1H



Sunny and bright spacious studio apartment available to rent in Marble Arch Apartments W1H.

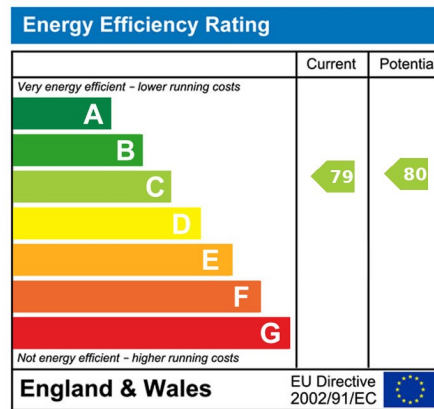
This Studio apartment is set in a well known, twenty four hour portered block. In good condition throughout, with fitted kitchen, shower room/wc and spacious studio room. Centrally located for local shops, Edgware Road, Baker Street and Marble Arch Underground Stations a short walk away.

- ✓ Entrance Hall
- ✓ Spacious Studio Room
- ✓ Fitted Kitchen
- ✓ Shower Room/wc
- ✓ Wood Flooring
- ✓ Washing machine
- ✓ 24 Hour Porter

These particulars are intended to give a fair description and guidance to intending purchasers/tenants and do not constitute an offer or contract. All measurements are approximate and for guidance only. Park Estates London.

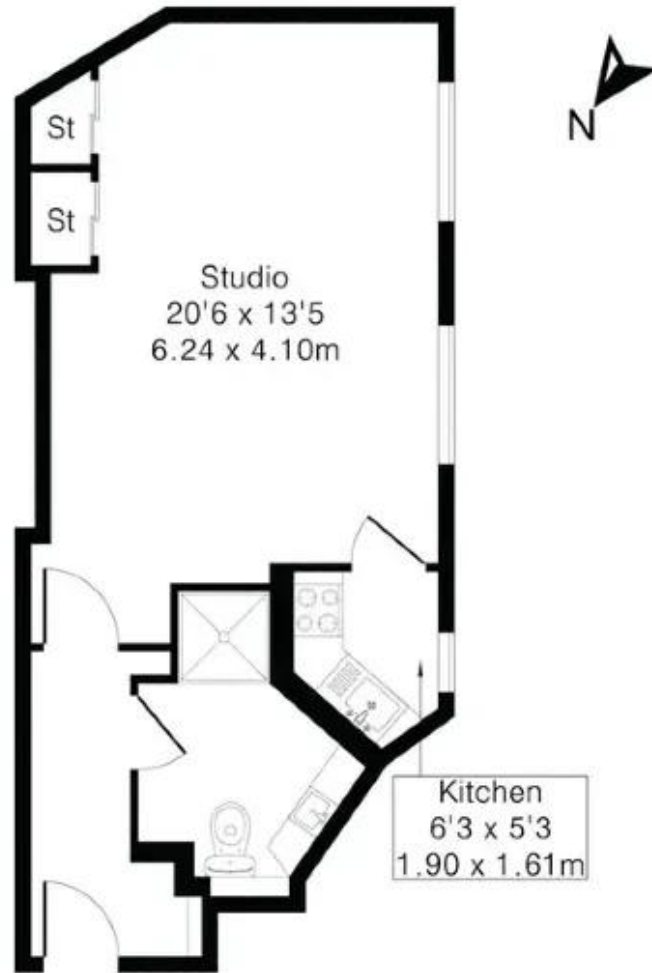


Energy Performance Certificate



Floor Plan

Approximate Gross Internal Area 368 sq ft – 34 sq m



Third Floor