

£1,100,000
Harrowby Street, Marylebone, W1H



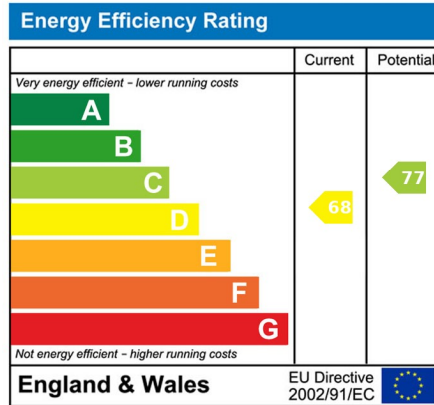
Bright 3 DB Apartment in Marble Arch Apartments W1H

Spacious 3 double bedroom apartment situated in Marble Arch Apartments, a popular 24 hour portered block. This apartment is in good condition throughout, with a modern fitted kitchen and walk in shower wc. Built in wardrobes in all double bedrooms, this apartment is spacious and light. A ten minute walk will take you to Baker Street and Hyde Park. Edgware Road and Marble Arch Underground are close by.

- ✓ Entrance Hall
- ✓ Reception Room
- ✓ 3 Double Bedrooms
- ✓ Fitted Kitchen
- ✓ Bathroom/wc
- ✓ Built in wardrobes
- ✓ Approx 975 year Lease
- ✓ Good Condition
- ✓ 24 Hour Porter
- ✓ 10 minutes walk to Baker Street & Hyde Park

These particulars are intended to give a fair description and guidance to intending purchasers/tenants and do not constitute an offer or contract. All measurements are approximate and for guidance only. Park Estates London.

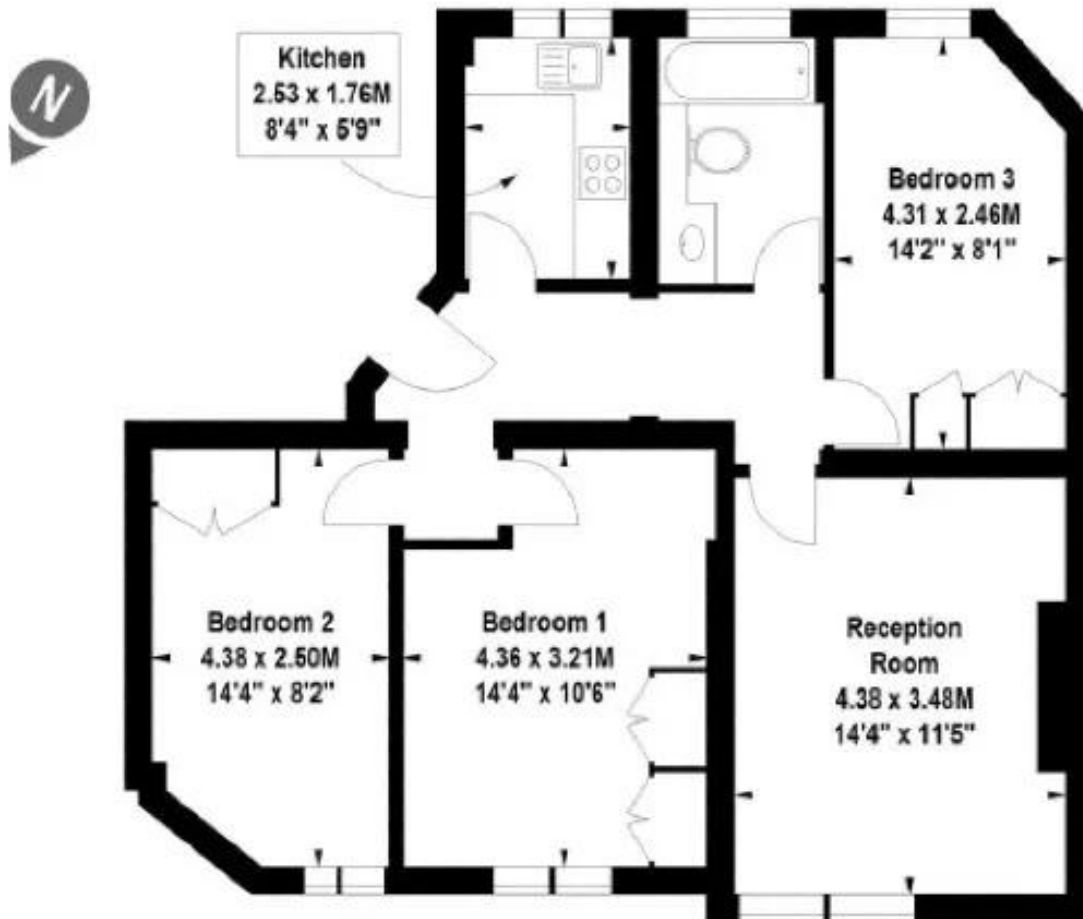
Energy Performance Certificate



Floor Plan

Marble Arch Apartment, W1H

Approximate gross internal area 71.25 sq m / (767 sq ft)



Second Floor

Illustration for identification purposes only, not to scale
All measurements are maximum, and include wardrobes and window bays where applicable